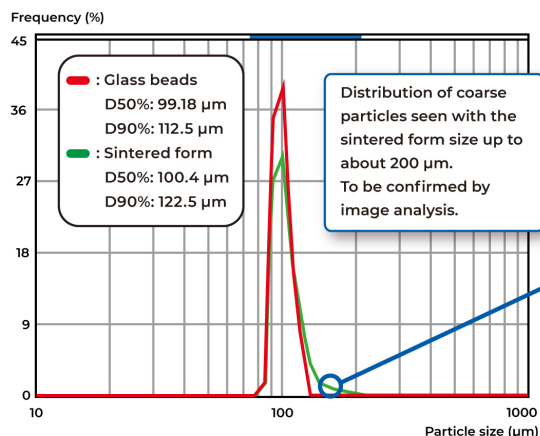


## Evaluation of Particle Size Distribution and Aggregates

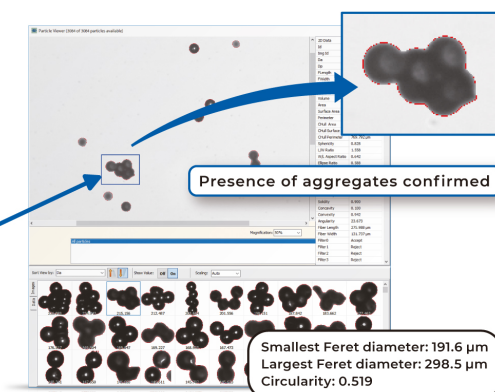
### Samples: Glass Beads and Their Sintered Form

Evaluation of the shape by image analysis, **expected to endorse the results** of particle size distribution measurement by laser diffraction/light scattering, revealed that the distributed coarse particles of the sintered form were sintering-induced “aggregates”.

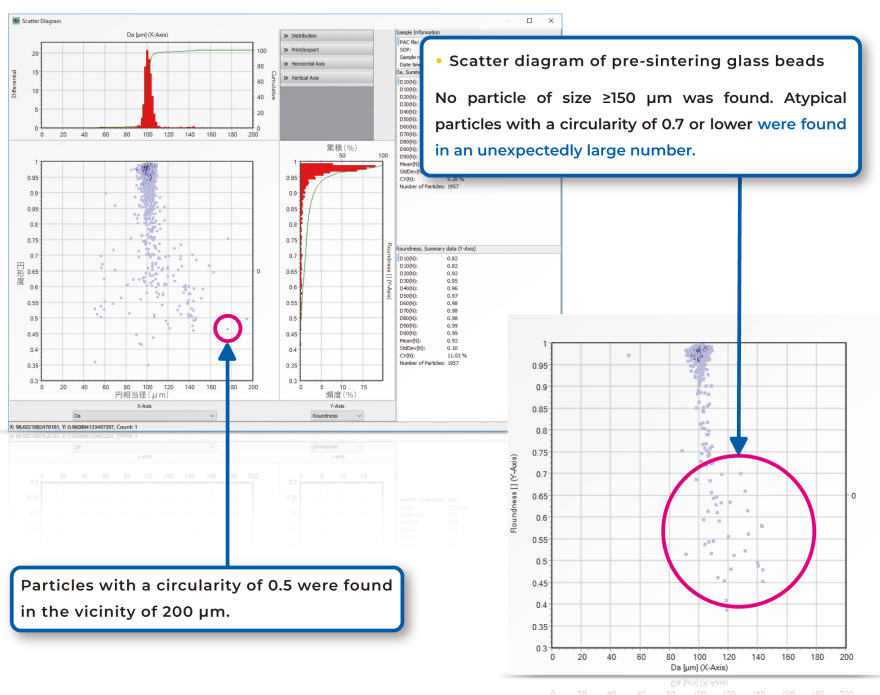
- Particle size distribution evaluation of all granules by laser diffraction / light scattering



- Shape analysis / aggregate evaluation of individual particles by dynamic image analysis



- Scatter diagram after glass bead sintering (image analysis)



**Apparatus**

"Particle Size Distribution and Shape"  
Measurement Microtrac MRB system Sync  
Measuring range: 0.02-2000  $\mu\text{m}$   
Particle size distribution: Laser diffraction /  
light scattering  
Shape evaluation: Dynamic image analysis



For further information please contact us at:

[www.microtrac.com](http://www.microtrac.com)